



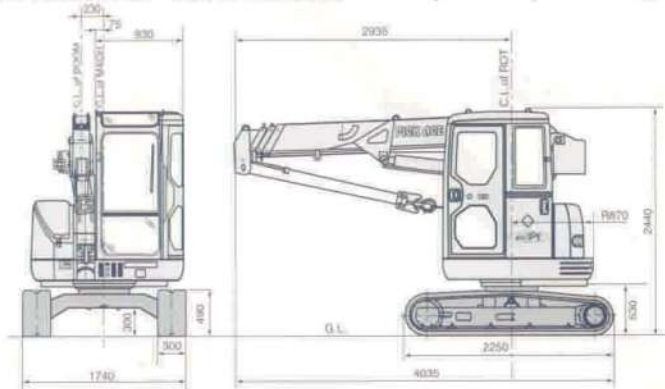
## 3T Mini Crawler

**AE** engineering  
Fylde Limited  
**CRANE AND PLANT HIRE**

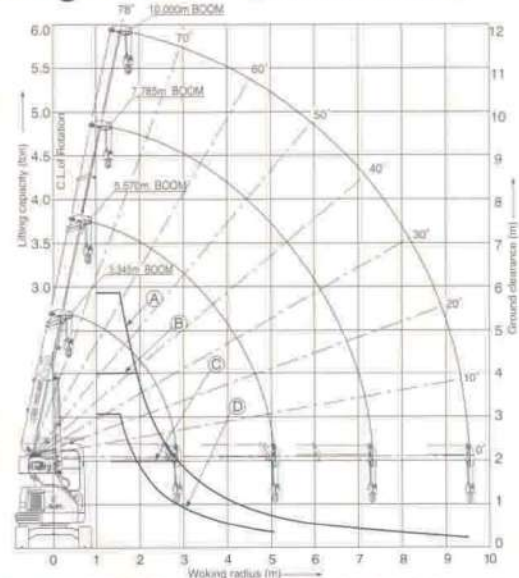
**01523 422 044**  
**[www.ae-engineering.co.uk](http://www.ae-engineering.co.uk)**

## SPECIFICATION

### General dimensions (Unit:mm)



### Working radius (3.34~10.0m Boom)



[Note]

\*Working radius\* means a horizontal distance from the center line of rotation to the hook center. Working radius shown actual radius which considered deformation by lifted load.

### CCH30T overall rated load (3.345m~10.0m/4-stage boom)

Working radius (m)	Boom length	In static lifting			In travel lifting
		(A) 3.345~5.570	(B) 5.570~7.785	(C) 7.785~10.000	(D) 3.345~5.570
1.55		2930	2000	1000	1530
1.70		2550	2000×1.92m	1000	1280
2.00		1860	1860	1000	930
2.30		1450	1450	1000	730
2.50		1250	1250	1000×2.85m	630
3.00		920	920	920	460
3.50		710	710	710	360
4.00		560	560	560	280
4.50		450	450	450	230
5.00		370	370	370	190
5.50		360×5.07m	310	310	180×5.07m
6.00			270	270	
6.50			240	240	
7.00			210	210	
8.00			200×7.28m	170	
9.00				130	
9.50				110	

(Unit : kg)

### Notes

- All rated loads are in accordance with the requirements of Clause 9, stability of B.S.1757, 1986 with wind forces to tables 5(a) and 6(a) of B.S.2573, Part1:1989. The machine must be operated on the firm level ground. Rated loads are the value at any point of 360° around the machine.
- The weight of hook block and other lifting devices must be considered to be a part of the load. 2.93 ton hook (4 parts of line): 30 kgs.
- The lifting load during traveling state is the load where it is statically lifted and then traveled on a firm, level ground. In this case the load should be held in a position close to the ground without rapid start, rapid stop, spin turn, and other similar operations.
- While a load is lifted and the machine is traveled, do not conduct crane operations such as load raising/lowering operations, boom raising/lowering operations, and boom extension/retraction operations.
- The load applied is limited depending on the number of ropes reeved as follows:  
4 parts of line: Up to 2.93 tons. 3 parts of line: Up to 2.25 tons.  
2 parts of line: Up to 1.50 tons. 1 part of line: Up to 0.75 ton.
- Wire rope specification  
Main hoist:  $\Phi 8$  mm Guaranteed breaking strength of 4.3 kN(4.39 tons)  
7×7+6×WS(26)

### Specifications

Performance	
Boom length	3.345m~10.0m four-stage boom
Max. lifting load×working radius	2.93t×1.55m
Max. lift above ground level of hook	10.9m
Load hoisting/lowering rope speed	72m/min (4th layer)
Boom hoist speed	10.0 sec/10° ~76°
Boom extension speed	14.0 sec/3.345m~10.0m
Swing speed	2.1 min <sup>-1</sup> (2.1rpm)
Traveling speed	High 3.8km/hr, Low 2.5km/hr
Weight	
Total equipment mass	3900kg with 3.345m~10.0m four-stage boom
Average ground bearing pressure	Approx. 35kpa (0.36kg/cm <sup>2</sup> )
Engine	
Make	Yanmar Diesel Co., Ltd.
Model	3TNE84-IKA
Type	4cycle, water cooled, overhead valve, direct injection type
Rated output	19.7kW/2400min <sup>-1</sup> (26.8PS/2400rpm)
Max. torque	98Nm/1500min <sup>-1</sup> (10kgf·m/1500rpm)
Displacement	1496cc
Fuel tank capacity	30lit
Battery	12V-55AH
Hoist device (Main/Aux.)	
Hydraulic motor	Axial piston type
Reduction gear	Spur gear two-stage reduction
Hoist drum	Grooved type
Brake	Wet type multi-desk automatic brake
Hoist rope	Rope length $\Phi 8$ mm×63m
Boom hoist device	Double acting direct-push type hydraulic cylinder
Swing device	
Hydraulic motor	Fixed displacement internal gear type
Reduction gear	Spur gear (internal gear) one-stage reduction
Swing bearing	Single ball bearing type
Brake	Wet type multi-desk brake (with brake valve)
Travel unit	
Hydraulic motor	Variable displacement plunger
Reduction gear	Spur gear one-stage + cycloidal gear one-stage reduction
Shoe	Rubber crawler (300mm)
Driving pump	
Axial piston pump 2	Gear pump 2
Safety device	
Swing brake/ Overhauling prevention device/ Boom angle indicator/ Hook wire sling stopper/ Gate lock lever/ Hydraulic safety valve/ Counterbalance valve	