



Komatsu LC605

AE engineering
Fylde Limited
CRANE AND PLANT HIRE

01523 422 044
www.ae-engineering.co.uk

SPECIFICATION

KOMATSU LC605							
DUTY CHART FOR BOOM LENGTHS 3.74m TO 10.92m							
STATIONARY 360° AND TRAVELLING 1410kg BALLAST							
IN KGS							
RADIUS	BOOM LENGTH 3.74 – 6.14m		BOOM LENGTH 6.14 – 8.53m		BOOM LENGTH 8.53 – 10.92m		RADIUS
	(mts)	STATIC	MOBILE	STATIC	MOBILE	STATIC	
2.00	5000	2000					2.00
2.10	4500	2000					2.10
2.25	4000	2000					2.25
2.45	3500	1750	3000	1500			2.45
2.70	3000	1500	3000	1500			2.70
3.00	2560	1280	2560	1280	2000	1000	3.00
3.50	2040	1020	2040	1020	2000	1000	3.50
4.00	1690	845	1690	845	1690	845	4.00
4.50	1430	715	1430	715	1430	715	4.50
5.00	1230	615	1230	615	1230	615	5.00
5.50	1070	535	1070	535	1070	535	5.50
5.94	970	485	970	485	970	485	5.94
6.00			960	480	960	480	6.00
6.50			800	400	800	400	6.50
7.00			690	345	690	345	7.00
7.50			580	290	580	290	7.50
8.00			520	260	520	260	8.00
8.33			490	245	490	245	8.33
9.00					420	210	9.00
10.00					330	165	10.00
10.72					280	140	10.72

KOMATSU LC605-2

DUTY CHART FOR BOOM LENGTHS 3.74M TO 10.92M
 STATIONARY 360° AND TRAVELLING 1410 KGS BALLAST
 (MACHINE RIGGED TO 4 FALLS)
 CAPACITIES GIVEN IN KGS.

BOOM LENGTH
3.74 - 6.14 Metres

BOOM LENGTH
6.14 - 8.53 Metres

BOOM LENGTH
8.53 - 10/92 Metres

RADIUS	STATIONARY	MOBILE	STATIONARY	MOBILE	STATIONARY	MOBILE	RADIUS
2.0	4900	2000					2.0
2.10	4500	2000					2.10
2.25	4000	2000					2.25
2.45	3500	1750	3000	1500			2.45
2.70	3000	1500	3000	1500			2.70
3.00	2560	1280	2560	1280	2000	1000	3.00
3.50	2040	1020	2040	1020	2000	1000	3,50
4.0	1690	845	1690	845	1690	845	4.0
4.5	1430	715	1430	715	1430	715	4.5
5.0	1230	615	1230	615	1230	615	5.0
5.5	1070	535	1070	535	1070	535	5.5
5.94	970	485	970	485	970	485	5.94
6.0			960	480	960	480	6.0
6.5			800	400	800	400	6.5
7.0			690	345	690	345	7.0
7.5			580	290	580	290	7.5
8.0			520	260	520	260	8.0
8.33			490	245	490	245	8.33
9.0					420	210	9.0
10.0					330	165	10.0
10.72					280	140	10.72

The above table is in compliance with British Standards for a machine on flat firm ground.

Wylie w2245 SLI fitted and calibrated in accordance with above figures.

When on 2 fall duty 2 - 3 Metre radius on static duties, maximum lift is 2500 Kgs.

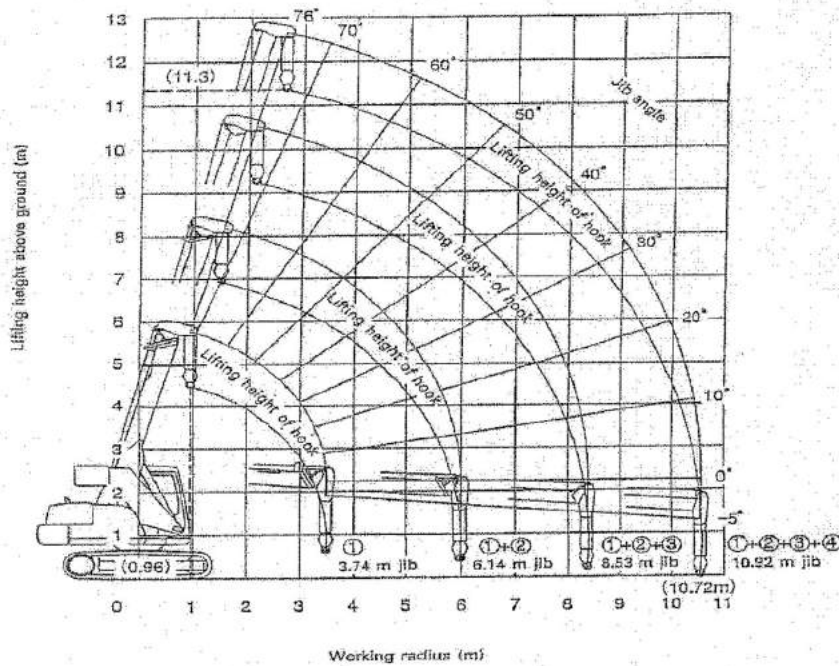
At radii greater than 3 Metres, duties are as 4 fall.

Weight of hook block = 80 Kgs.

Deductions from the lift crane capacities must be made for the hook block & slings etc.

Working radius lifting height graph

KOMATSU LC605



The above graph shows the condition when there is no load, and does not include any deflection of the jib.

